



OFFICE
6, 29-40, 47-50

St. Georges Road, Addlestone, KT15 2AY

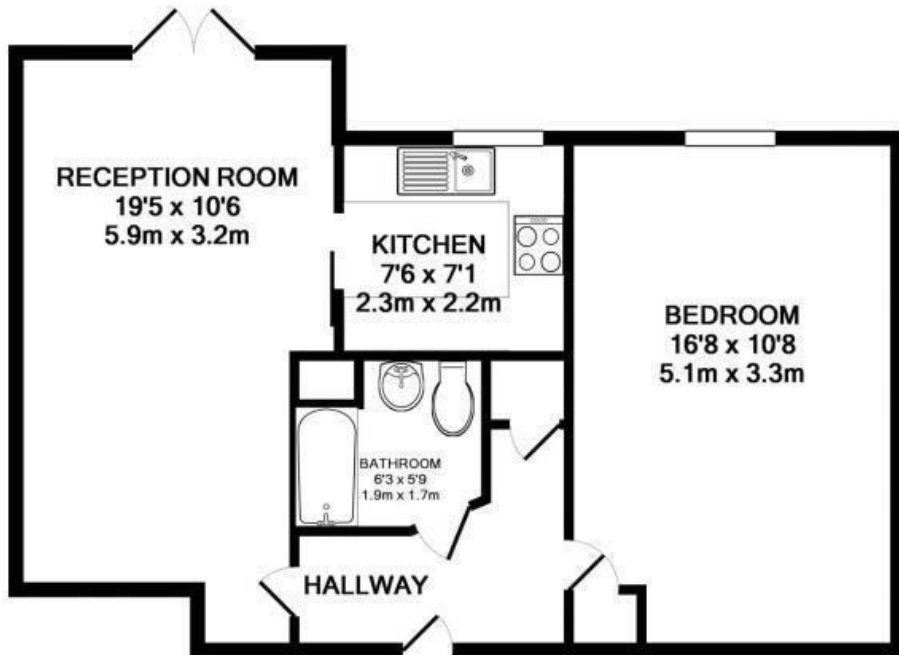




Offered to the market with no onward chain is this ground floor one bedroom apartment set in an over 55's (women) & over 60's (men) development a short stroll from the town centre. The property consists of a good size double bedroom with built in storage, shower room with easy shower access, kitchen with own laundry facilities and living room with doors out to a small patio as well as the communal gardens. The development benefits from communal gardens, owners lounge, 24hr careline system in the apartments and communal areas and a lodge manager who is on duty Mon - Fri. New Owner to be Provided with a new 99 year lease upon completion.

Leasehold





TOTAL APPROX. FLOOR AREA 496 SQ.FT. (46.0 SQ.M.)

Whilst every attempt has been made to ensure the accuracy of the floor plan contained here, measurements of doors, windows, rooms and any other items are approximate and no responsibility is taken for any error, omission, or mis-statement. This plan is for illustrative purposes only and should be used as such by any prospective purchaser. The services, systems and appliances shown have not been tested and no guarantee as to their operability or efficiency can be given

Made with Metropix ©2016

EPC Rating: 69 C





Grants Homes 155 Station Road, Addlestone, Surrey, KT15 2AT
T: 01932 858885 E: addlestone@grantshomes.co.uk

